



Cast basalt tiles / bricks

Cast basalt is a mineral material produced by melting natural basalt at a temperature of approximately 1300°C, followed by casting into moulds. This contributes to its superb physical and chemical properties.

We offer cast basalt tiles for coal bunkers and chutes. These cast basalt tiles are bedded as well as jointed in cement/special bonding agents like resins depending upon application. These tiles mostly find application in automotive industry and are designed to provide long-lasting lining and enhancement to involved operational life cycle for both plant as well as equipment.

Data of Cast basalt tiles

Chemical component

Chemical Substance (weight%)									
SiO ₂	Al ₂ O ₃	Fe ₂ O ₃	TiO ₂	CaO	MgO	K ₂ O	Na ₂ O	FeO	P ₂ O ₅
43.13-	12.50-	8.64-	2.02-	9.05-	8.65-	1.40-	4.62-	4.82-	1.10-
44.12	13.52	9.50	2.62	10.22	10.47	1.75	5.28	6.25	1.38

Physical property

ITEM	INDEX
Specific Gravity	2.9-3g/cm ³
Compression strength	≥450Mpa
Bending Strength	≥35Mpa
Impact Strength	1.76MJ/m ²
Abrasive Resistance	0.07g/cm ²
Diamond Penetrator Hardness	≥7mohs
Modulus of Elasticity(Room Temperature)	1.67×10 ⁵ Mpa
Expansion Coefficient (Room Temperature to 600°C)	8.92×10 ⁻⁶
Operating temperature	≅350°C
Corrosion Resistance	
95%--98%H ₂ SO ₄	≥98%
20%H ₂ SO ₄	≥94%
20%NaOH	≥98%

Advantages:

- * Utilizing Cast Basalt enhances and improves operational life of plants.
- * These are best suited for jobs where extensive cutting is needed.
- * We can also deliver pre-cut tailored tiles based on the considerations of vibration, impact and other factors at client's end.





Cast basalt tile standard specification

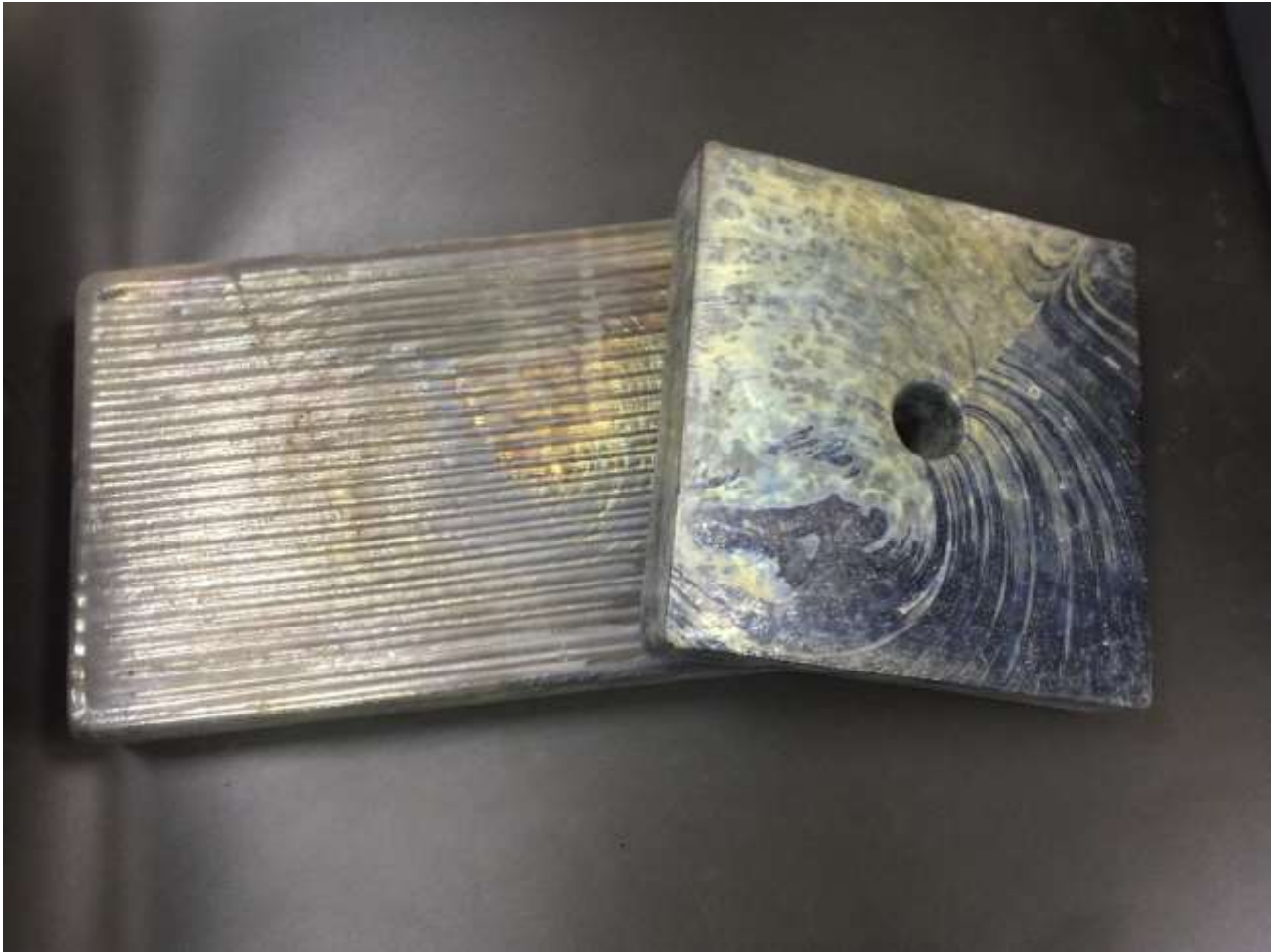
Thickness(mm)	Length * Width(mm)
16-20	< 200
20-30	< 300
30-50	< 400

Combined with the cast basalt production technology. We can manufacture cast basalt tiles according to various sizes and shapes.

Ultra-thin cast slate: the thinnest 12mm

The self-developed ultra-thin Cast basalt tile is a new product of the international advanced level.





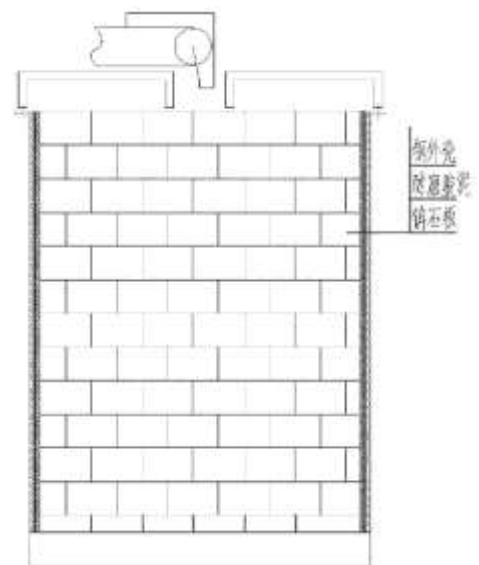


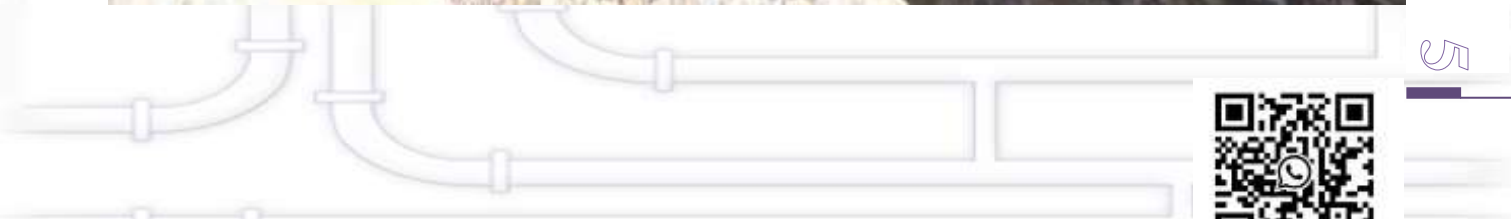
Application

Cast basalt tiles is mainly used in thermal power plants, steel mills, mines and other parts with heavy wear, such as raw coal bunkers, mine bins, coal unloading trenches, hoppers, ore troughs, flotation machines, chutes and other parts.

Round coal bunker lining: ultra-thin cast slate
14-20mm thick;

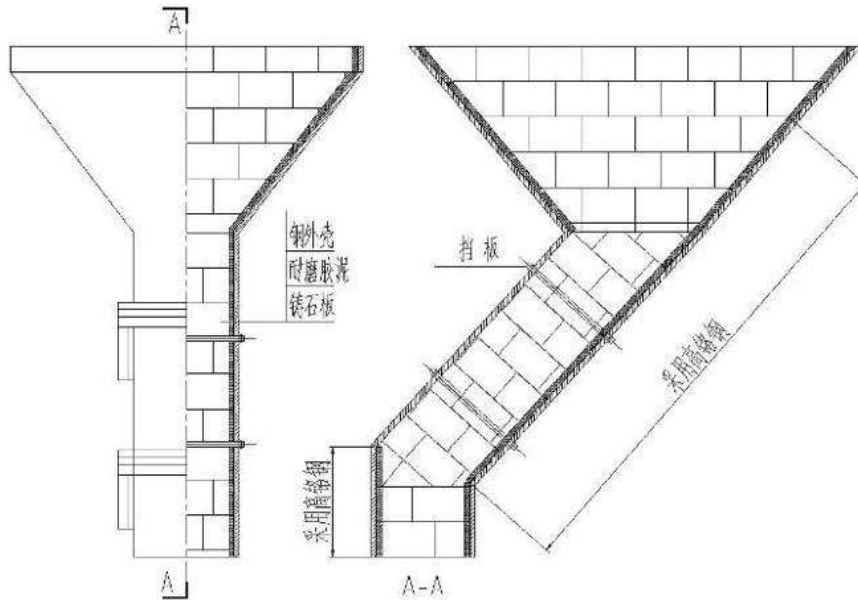
Coal discharge ditch lining: commonly used 25-
30mm thick cast slate;





Coal drop bucket lining:

lined with cast slate, generally 25-30mm (high chromium steel is best used for coal drop points);



Slag fishing machine liner:

cast slate hexagon, quadrilateral, rhombus;





Ash ditch:

straight ditch, curved ditch, confluence, fork;



SCAN WHATSAPP

Brake discs in the automotive field:

Cast basalt tiles are used in the field of automotive brake testing





Cast basalt pipe shield / half pipe

Cast basalt pipe shields have an excellent performance of high abrasive and high corrosion resistance.



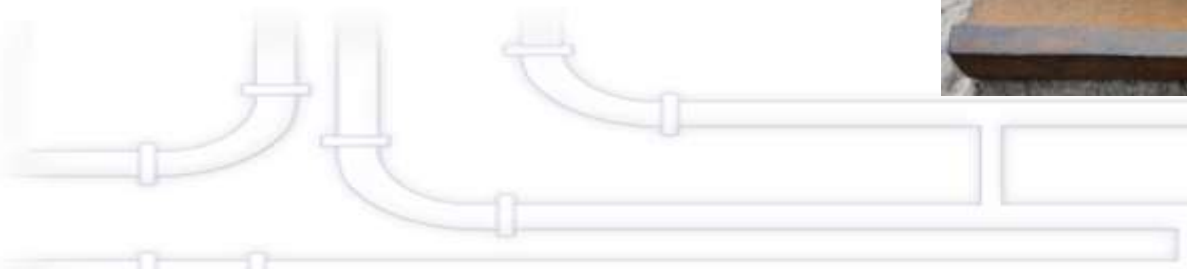
Cast basalt pipe shield is a common component of the heating part of tubes.





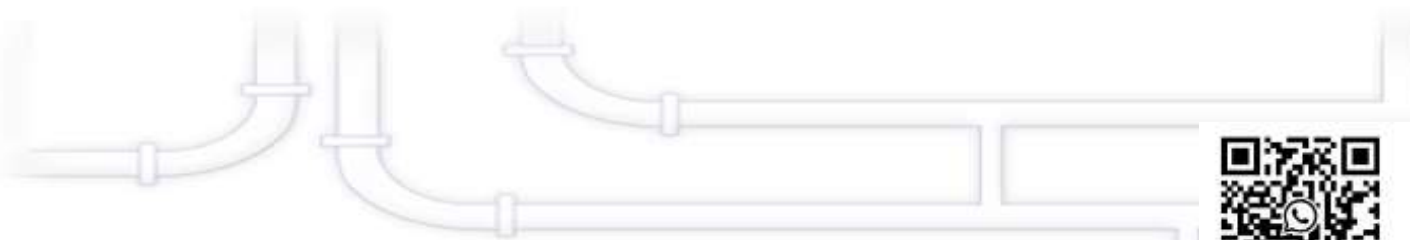
It is usually used in power station boilers. The useful life of tube shield is 3-5years.

The tube shield has a variety of material and the selection of the material shall be subject to the original design of the boiler. The tube shield is divided into straight pipe and bend pipe. The main effect of tube shield is to protect the pipe and increase the service life of the pipe.





Delivery





List of Core values

Professional, Reliable, Efficient

SUNNY STEEL ENTERPRISE LTD.

Phone:+86 21 3378 0199

Fax:+86 21 5107 9722

E-mail:sales@sunnysteel.com

Collect steel pipes and fittings

